
Whole Body Bone Scan

What is a Bone Scan why is it done?

A whole body bone scan is a Nuclear Medicine test that helps doctors track various types of bone ailments and disease progression throughout the entire skeleton.

A bone scan is an important tool for staging in cancer. Doctors will often order a bone scan to check for progression of cancer.

This scan can be beneficial in diagnosing a variety of bone diseases including:

- Fractures
- Paget's diseases of the bone
- Cancer originating in the bone
- Bone Metastases
- Arthritis
- Infection of the joints and joint replacements
- Osteomyelitis
- Impaired blood supply to the bones
- Avascular necrosis or death of bone tissue

How to prepare for a Bone Scan:

There are no restrictions for a bone scan. You may eat, drink and take your medications as you normally do.

Bone scans are typically not performed on pregnant woman. Please alert your doctor or technologist if you are pregnant or think you may be.

What to expect:

A Nuclear Medicine Technologist will greet you in the waiting room and bring you back to the department. You will receive an injection of a small amount of a radioactive isotope that allows us to see your bones under the camera. The injection will not back you feel any different and has no side effects.

We will let the isotope circulate for about 3 hours. The technologist will give you a return time. During your waiting time, you may leave the hospital as well as eat and drink. We ask that you drink extra fluid as it helps circulate the isotope into the bone.

When your waiting time is complete, please check in at the receptionist desk. A Nuclear Medicine Technologist will meet you in the lobby and bring you back to the department.

You will be asked to remove all external metal from your body and lay on the imaging table. Two camera heads will scan your body from head

to toe. Additional areas of interest may be imaged if necessary. The imaging process takes approximately 45 minutes.

Post Bone Scan

A bone scan has no side effects. Contact your physician with any questions or concerns.

Results

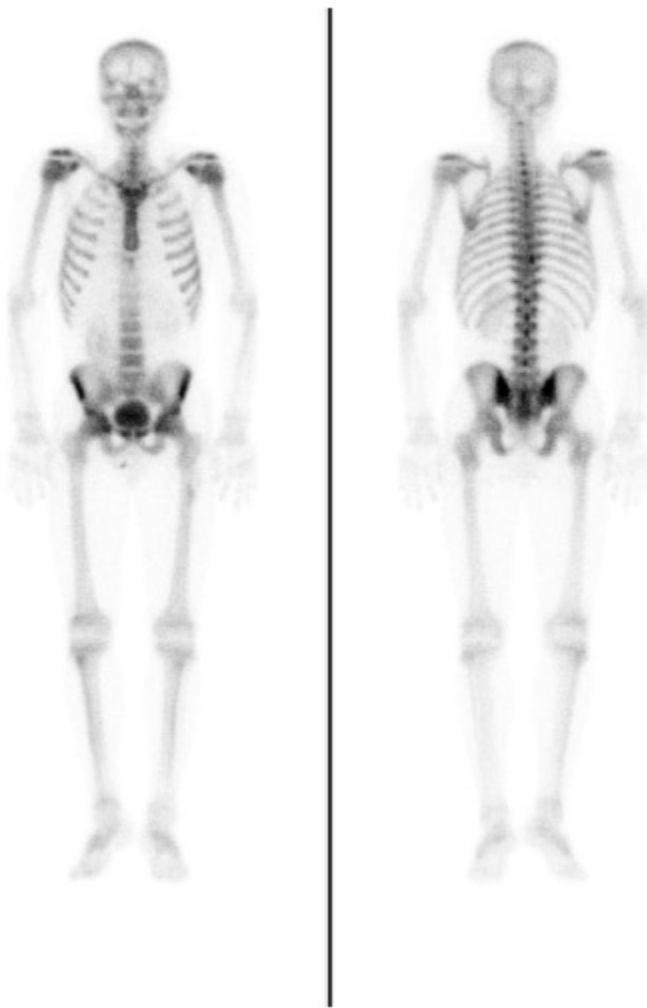


image 1

Bone Scan Patient Education - Brigham and Women's Hospital.

[https://www.brighamandwomens.org/radiology/nuclear-medicine/bone-scan.](https://www.brighamandwomens.org/radiology/nuclear-medicine/bone-scan)

Accessed 29 June 2021.